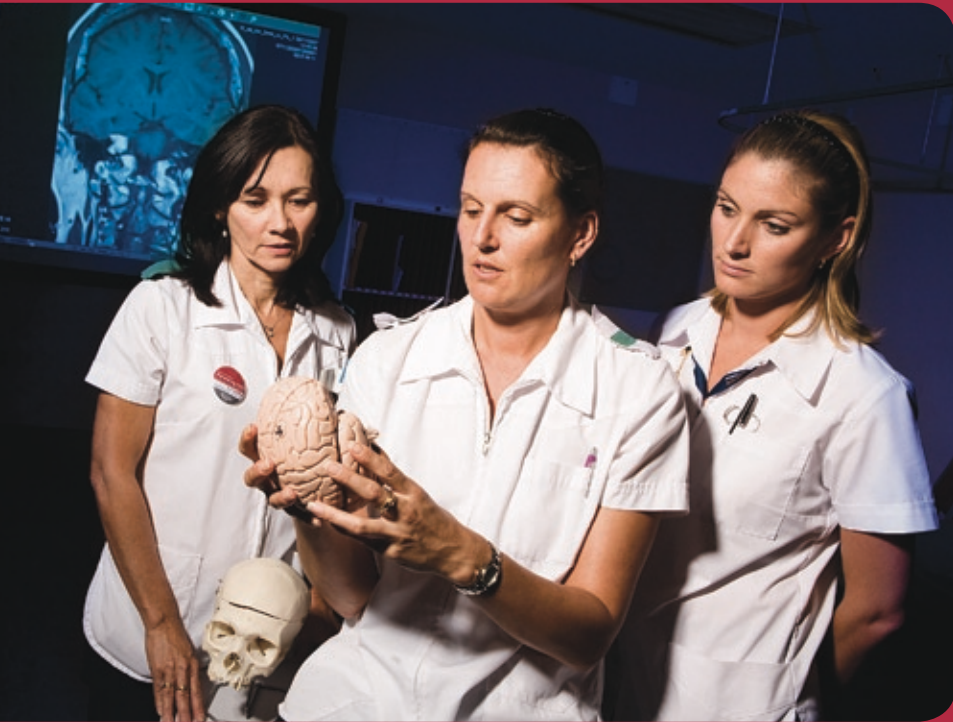


# > graduate info



[www.nursingwa.com.au](http://www.nursingwa.com.au)

*...the Career of a Lifetime*

# > Graduate Nurse Programs



AT RPH, WE OFFER OUR NURSES EXCEPTIONAL CAREER OPPORTUNITIES ACROSS A COMPREHENSIVE RANGE OF ADULT HEALTH CARE SERVICES. WE ALSO OFFER THE BROADEST RANGE OF SPECIALTIES AVAILABLE TO GRADUATE REGISTERED AND ENROLLED NURSES.

## > What's on offer?

Royal Perth Hospital is experienced in delivering the ideal **supportive** and **rewarding** learning environment that a graduate nurse needs.

A career in nursing is very flexible compared with other professions. RPH is required to deliver patient care 24/7 and most areas work on request driven rosters. During your graduate program you will work a variety of shifts including morning, afternoon, weekend, public holidays and night duty. It is an opportunity to experience the different and specific roles that each of these shifts require.

### All our programs offer you:

- > 24-month competency based program with four 6-monthly rotations to a variety of clinical areas. The program has exit points at 12, 18 and 24 months.
- > Comprehensive one-week orientation on commencement with supernumerary days at the beginning of each rotation
- > Excellent support from ward staff and ward based Staff Development Nurses
- > Seven structured study days, and one professional development day of your choice over the 24-month program - Study days are designed to link theory into developing clinical practice and to meet ongoing learning needs
- > Monthly graduate network meetings for support and professional development

### Dates of Intakes:

2 Intakes each year in January & July

As an RPH graduate nurse you are important us and we will do our best to accommodate you wherever possible. We're committed to making your graduate program experience valuable, rewarding and an excellent start to your professional nursing career.

## > We have clinical rotations available in the following areas

### **Medical**

Dermatology / Diabetes / Endocrinology, Gastrointestinal & Hepatology, General Medicine, Geriatric Evaluation and Management Unit, Geriatric Medicine, Haematology / Oncology, Immunodeficiency Unit, Medical Day Procedure Unit, Nephrology, Neurology, Respiratory, Stroke Unit / Epilepsy

### **Mental Health**

Inpatient (voluntary)

### **Tertiary Rehabilitation**

Acquired Brain Injury Rehabilitation, Fractured Neck of Femur / Rheumatology / Amputee / Isolation, Neurology Rehabilitation, Elective Orthopaedic Rehabilitation, Post-Trauma Orthopaedic Rehabilitation, State Spinal Unit

### **Surgical**

Short Stay Surgical Unit, Cardiothoracics, Vascular, Day Surgery Unit, Elective Orthopaedics, General Surgical, Gynaecology, Maxillofacial, Neurosurgery, Trauma Orthopaedics, Ophthalmology, State Adult Trauma Unit, Plastics, Acute Spinal, Urology

### **Bone Marrow Transplant Unit**

A specialist area where either Peripheral Blood Stem Cell or Bone Marrow transplants are undertaken.

### **Burns Unit**

The only adult burns unit in Western Australia.

### **Critical Care**

Cardiac Catheter Laboratory, Cardiology, Coronary Care Unit, Emergency Department, High Dependency Unit, Intensive Care Unit

### **Operating Theatres**

14 theatres in Perth City and 3 theatres in Shenton Park

### **Radiology**

Barium Screening, CT, Diagnostic and Interventional Suite, MRI, Nuclear Medicine, Ultrasound

### **Specialty Clinics**

Dialysis, Gastroenterology, Medical / Radiation Oncology / Immunodeficiency, Medical Day Procedure Unit

**MORE INFORMATION ON ALL OF THESE AREAS IS AVAILABLE AT**  
[www.nursingwa.com.au/content/specialtiesandcampuses](http://www.nursingwa.com.au/content/specialtiesandcampuses)



## > Option 1 - Registered Nurse and Enrolled Nurse Graduate Program

The Graduate Nurse Program is designed for graduate Registered and Enrolled Nurses who want to consolidate their knowledge in a general health setting in WA's largest health teaching environment.

### First Year

During the first 12 months of the program we offer placements at both our Perth City and Shenton Park campuses in the following areas:

- > Medical
- > Mental Health
- > Tertiary Rehabilitation
- > Surgical
- > Critical Care

You will spend six months each in two of these areas. Gaining experience in these areas of nursing will give you a solid foundation in your nursing practice and give you the skills you need to specialise.

See page 12 for a full list of wards/departments on offer for 1st and 2nd Rotations.

### Second Year

During the second 12 months of the program we offer placements at both our Perth City and Shenton Park campuses in the following areas:

- > Bone Marrow Transplant Unit
- > Burns Unit
- > Critical Care
- > Medical
- > Operating Theatre
- > Imaging

- > Rehabilitation
- > Surgical
- Speciality Clinics
- State Major Trauma Unit
- You will spend six months in two of these areas.

See page 12 for a full list of wards/departments on offer for 3rd and 4th Rotations.

## > Option 2 - Royal Perth / Bentley Mental Health Graduate Program

The Royal Perth Hospital / Bentley Mental Health Hospital Program is designed for graduate Registered Nurses who want to consolidate their knowledge in general and mental health. As one rotation is in a mental health setting, applicants must have Division 1 Comprehensive Nursing Registration.

In collaboration with Bentley Mental Health, we offer three 6-month rotations in the following areas:

Royal Perth Hospital (either Perth City or Shenton Park Campus)

- > Medical
- > Rehabilitation
- > Surgical

See page 12 for a full list of wards/departments on offer for RPH Rotation.

Plus a 6 month rotation in Bentley Mental Health

### Bentley Mental Health

- > Acute Triage, Hospital Ward, Open Wards and Authorised Wards
- > Long Term Care in Open or Authorised Wards
- > Pre-discharge
- > Tertiary Rehabilitation
- > State Forensic Mental Health Service



This program includes a one-week orientation at the beginning of each rotation. It includes study days at Royal Perth Hospital, plus professional development days at Bentley Hospital.

During the second 12 months of the program we offer placements at both our Perth City and Shenton Park campuses as per Option 1.



## > How to Apply for Graduate Positions at RPH

### Prerequisite

Applicants must be eligible for Comprehensive or General Nursing Registration with the Nurses and Midwives Board. Evidence of registration must be provided before you commence any of these programs.

### Application

If you would like to join the Royal Perth Nursing Team as a Graduate Registered or Enrolled Nurse, log onto [www.gnc.health.wa.gov.au](http://www.gnc.health.wa.gov.au) and apply via Graduate Nurse Connect in June/July each year.

## > FURTHER ENQUIRIES

Our Graduate Program Coordinators are more than happy to assist you with your enquiries:

Phone: (08) 9224 8592

Fax: (08) 9224 1958

Post: GPO Box X2213, Perth WA 6847

Email: [rph.graduate.nurse.co-ordinators@health.wa.gov.au](mailto:rph.graduate.nurse.co-ordinators@health.wa.gov.au)

- >live
- >learn
- >grow
- >innovate
- >inspire



Department of Health  
South Metropolitan Area Health Service



Royal Perth  
Hospital